



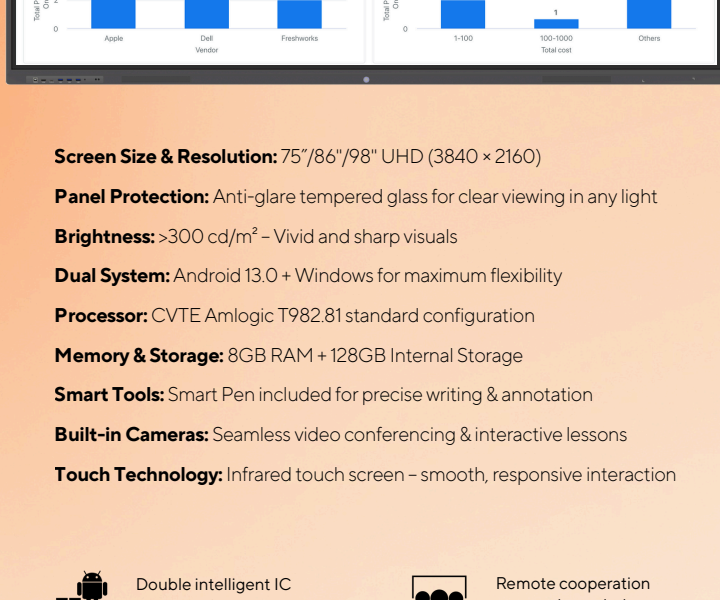
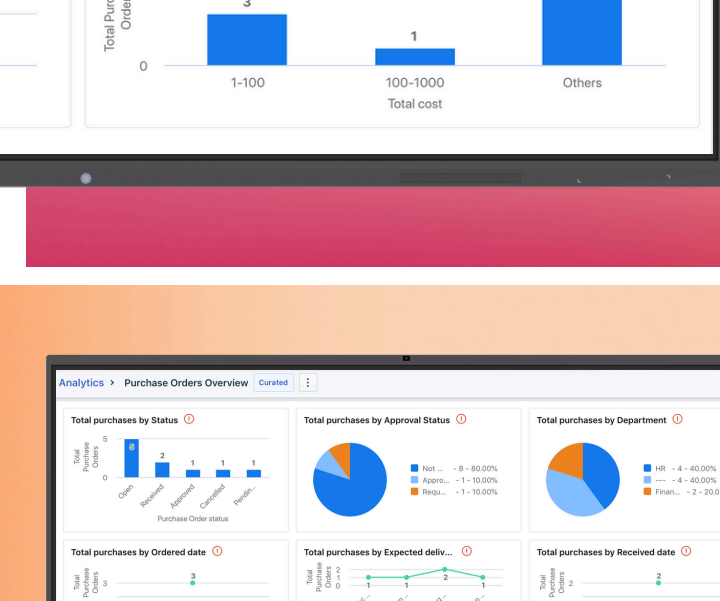
# Maldives



## Where Ideas Meet Intelligence

### The Intelligent Conference Whiteboard

is the next generation of high-efficiency office technology. Combining writing, presentation, and collaboration in one device, it transforms meetings into streamlined, engaging experiences. Break free from the limits of traditional conferences connect people across time and space, and create a smarter, faster, more productive workplace.



- Screen Size & Resolution:** 75"/86"/98" UHD (3840 x 2160)
- Panel Protection:** Anti-glare tempered glass for clear viewing in any light
- Brightness:** >300 cd/m<sup>2</sup> – Vivid and sharp visuals
- Dual System:** Android 13.0 + Windows for maximum flexibility
- Processor:** CVTE Amlogic T982.81 standard configuration
- Memory & Storage:** 8GB RAM + 128GB Internal Storage
- Smart Tools:** Smart Pen included for precise writing & annotation
- Built-in Cameras:** Seamless video conferencing & interactive lessons
- Touch Technology:** Infrared touch screen – smooth, responsive interaction

- Double intelligent IC double safe protection
- Remote cooperation open unbounded
- Intelligent writing operate comfortable
- Wireless projection screen
- Annotation and preservation of arbitrary interface
- Compatibility and wide-open rich application
- Welcome page signed on screen
- Scan QR sharing email delivery
- Professional display high-definition display

## Wall-Mounted Advertising Multimedia Player



- UHD** HD display
- Remote publication**
- intelligent voice**
- Intelligent split screen**
- Functions made**
- Cycling automatically**

- Screen Size:** 65" UHD 3840 x 2160
- Panel Quality:** A-Grade Open Cell
- Backlight:** Edge-Lit LED (ELED)
- Brightness:** 300+ cd/m<sup>2</sup> – Bright and vivid display
- Processor:** T982 High-Performance Chipset
- Memory & Storage:** 2GB RAM + 16GB Internal Storage
- Operating System:** Android – Easy to use, versatile
- Connectivity:** Wi-Fi ready (No 4G module)
- Touch Function:** Integrated multi-touch capability or not included

## Industries & Sectors



- Buildings:** Residential buildings, Commercial spaces & Public facilities
- Education:** Schools, Universities & Other educational institutions
- Retail:** Stores, Supermarkets & Shopping malls.
- Transportation:** Bus stops, Airports & Ferry Terminals

## Ideal for :

- Conference rooms
- Executive boardrooms
- Training centers
- Lecture halls
- Negotiation spaces
- Innovation hubs
- Medical consultations
- Senior offices

VISIT US AT OUR SHOWROOM TO SEE MORE OF THE FEATURES

**READY FOR PRE-ORDER!**



## Smarter Screens. Smarter Business.

- Double intelligent IC double safe protection
- Intelligent writing operate comfortable
- Professional display high-definition display
- Remote cooperation open unbounded
- Wireless projection screen



Connect with us

M. Beenaafushi,  
Muranga Magu,  
Male' 20330, Rep of Maldives  
+960 3312978, +960786 0233  
sales@palmtree.com.mv

